

MAINE MOTOR TRANSPORT ASSOCIATION ANNUAL MEMBERSHIP MEETING

**May 8, 2020
Via Zoom Video Conference**



MMTA Annual Membership Meeting – May 8, 2020

AGENDA

- Presentations
 - Abby Swaine (SmartWay)
 - Senator Brad Farrin (TRA Committee)
- COVID-19 Reports
- MMTA Reports
- Election of Directors



MMTA Annual Membership Meeting – May 8, 2020

SECRETARY'S REPORT

MAINE MOTOR TRANSPORT ASSOCIATION
MEMBERSHIP MEETING
January 9, 2020
PORTLAND, MAINE

Chairman Ed Therrien opened the meeting at 1430 with 19 members, three guests and 5 MMTA staff in attendance.

Self Introductions

Secretary's Report

A motion was made and unanimously voted to accept the Secretary's report.

Special Presentations:

Members heard from Senator Jeff Timberlake, Assistant Senate Republican Leader, who discussed the legislature's second regular session and issues that are important to the state and to businesses in Maine.

Industry Updates

Brian and Tim gave an update on the Blue Ribbon Commission on Infrastructure Funding, FMCSA Testing Rates, Drug & Alcohol Clearinghouse Update, Entry Level Driver Training Rule, Independent Contractor Stakeholder Group, Maine Climate Policy (Transportation & Climate Initiative and Maine's Climate Council as well as the Maine Jobs Council.

Reports:

- Randy indicated the 2020 MMTA training schedule has been published and asked that members communicate with him if they need additional trainings. He also announced the date for the TDC, PTSC and Future Trucker Championships as May 16, 2020. The TDC and FTC will again be held at Dysart's in Hermon and the PTSC at Eastern Maine Community College in Bangor.
- There was a discussion about the importance of having more members participate in submitting drivers for the Driver of the Month program.
- Tim reminded everyone of the upcoming Safety Management Council meeting where officers will change and there will be a discussion about repeat winners of the Fleet Safety Awards.
- Tim reported that the 2020 Maine Truck PAC golf tournament will be held on June 10th at Natanis in Vassalboro

Old Business

None.

New Business

None.

Adjourn

The meeting adjourned at 1555.

Respectfully Submitted, Shawn Moore, Secretary





BUILDING SUSTAINABLE SUPPLY CHAINS

Abby Swaine

EPA Region 1 – New England

Maine Motor Transport Assn

5/8/20





- Market driven partnership that helps businesses:
- Save money
- Stay competitive
- Demonstrate economic and environmental leadership by moving goods in the cleanest, most efficient way possible.
- Exchange performance data in ways that contribute to a stronger and more competitive economy and healthier air.



HOW SMARTWAY WORKS

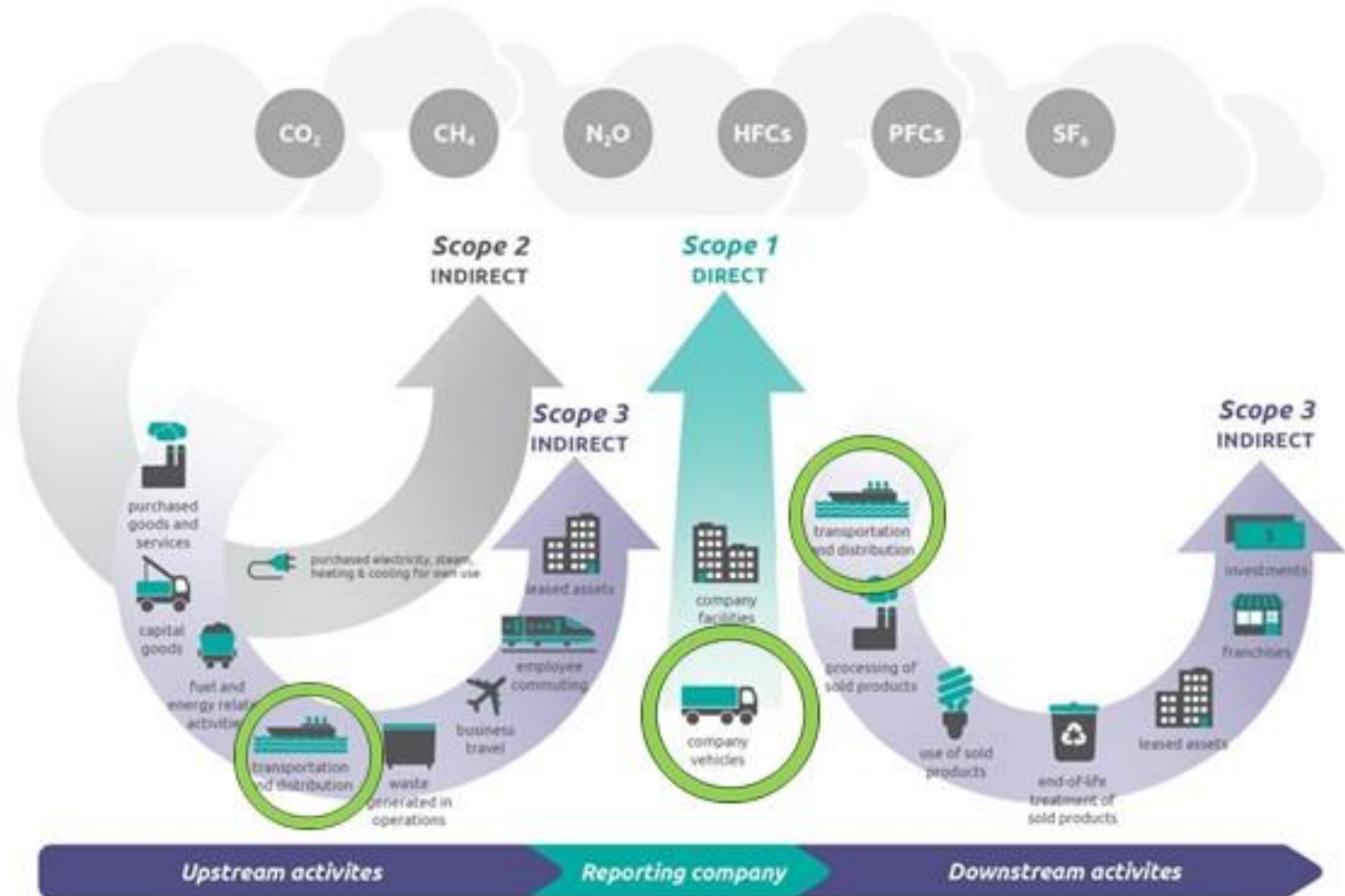
- Companies submit data on freight transportation activity using EPA assessment and tracking tools
- Tools calculate annual carbon footprint along with annual emissions of other air pollutants from transporting goods
- EPA ranks companies by environmental performance
- Recognition for top 1 – 2%



WHAT SHIPPERS SEE

- Despite its importance, freight isn't their main business
- Shippers want to strengthen their brands by highlighting and reporting on sustainability
- But how to improve what you can't see?

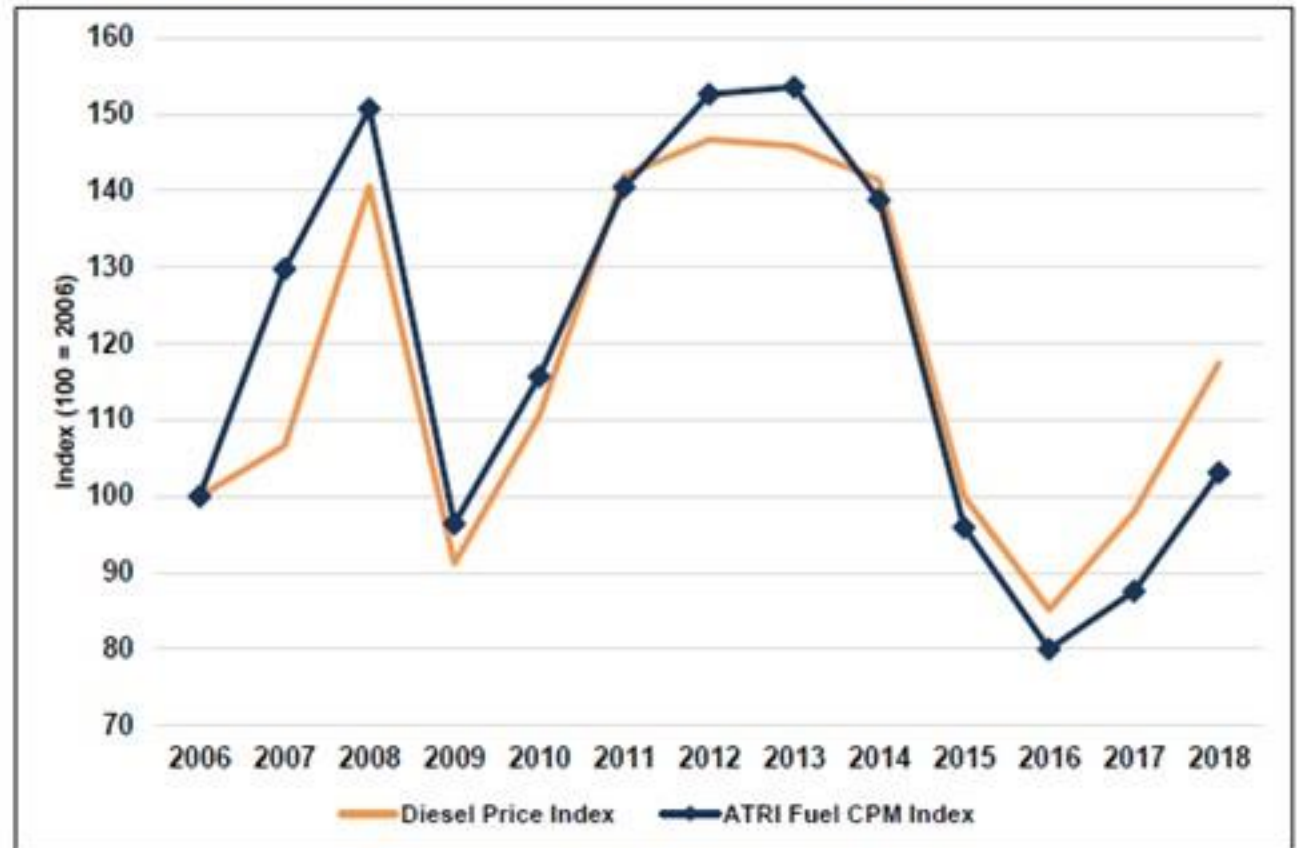
Figure [1.1] Overview of GHG Protocol scopes and emissions across the value chain



WHAT CARRIERS SEE

- Thin profit margins – fuel and wages = 64% of operating costs
- Shippers can't value investments in carrier efficiency, unless they "see" them
- New technologies and strategies can seem risky

Figure 3: Diesel Price and ATRI Fuel Cost per Mile Index, 2006-2018



Accounting Tools

SmartWay Truck Carrier Partner Resources

This page has everything you need to get the most out of being a registered SmartWay Truck Carrier.



Bookmark this page for your convenience.

What would you like to do?

You may need a PDF reader to view some of the files on this page. See EPA's [About PDF page](#) to learn more.

Measure Your Performance

View Carrier Ranking Data

Get Training

Improve Your Performance

Highlight Your Achievements

SmartWay Truck Carriers measure, benchmark, and improve their performance on an annual basis.

Make sure to submit your SmartWay Truck Tool by the due date to make sure your shippers and logistics companies can find you and be a SmartWay Truck Carrier in good standing.

Truck Tool Due Date

- Group 1: March 4, 2020
- Group 2: April 8, 2020
- Group 3: May 6, 2020

Truck Tool and Example Tool

The tool contains screen demos and guidance on each page to help you complete and submit your tool. This tab also contains additional guidance and worksheets to help you collect your data for tool submission.

- **READ THIS FIRST:** [How to Download the SmartWay Tool](#)
- [2020 SmartWay Truck Carrier Tool \(2019 Data Year\) \(XLSM\)](#)
(8 MB, January 2020) Save this official tool file to your computer before opening. Use this file for submitting your data--**Do not submit the example tool.** **FREE VIEWERS**
- [Example 2020 Truck Tool \(Filled In\) for Download \(XLSM\)](#)
(8 MB, January 2020) Save this example tool file to your computer before opening. This file is not for submitting your company's information--**Use the "Truck Carrier Tool" above for your official data submission.** **FREE VIEWERS**

Partner Key Information

- [Annual Eligibility Guidelines](#)
- [Data Quality Best Practices](#)
- [Tool Due Date Schedule](#)
- [Webinars/Events](#)
- [SmartWay Portal](#)

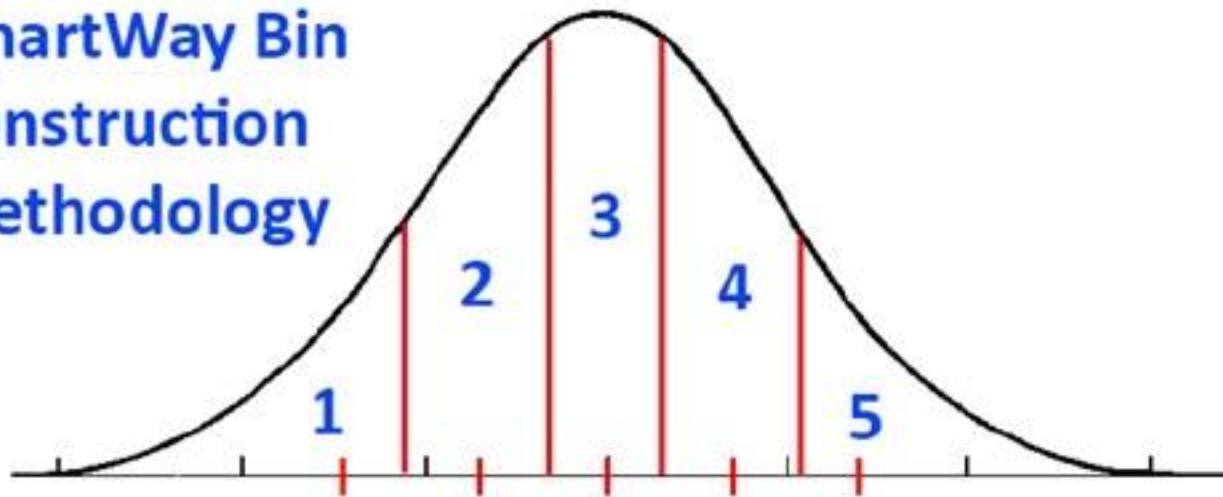
TRUCK CARRIER DATA

- Body type (dry van, tanker, etc)
- Model year and class
- Operational category (TL, LTL, etc)
- US vs Canada % travel
- Fuel types and gallons/kWhrs consumed
- Miles (total, revenue & empty)
- Average payload by class
- Road type / speed category split
- Avg annual idle hours per truck
- PM reduction equipment (pre-2006)

PERFORMANCE BENCHMARKING

- Emission metrics are benchmarked using performance ranges.
- All carriers within a given range receive the same benchmark: the midpoint of the range.
- This approach provides enough information to inform the market, while maintaining carrier confidentiality.

SmartWay Bin Construction Methodology



Quintile Rankings

(ex: Truckload CO₂ g/mile)

Top 20% TL Dry Vans

• 1405 g/mile

Second 20% TL Dry Vans

• 1495 g/mile

Middle 20% TL Dry Vans

• 1585 g/mile

Fourth 20% TL Dry Vans

• 1675 g/mile

Bottom 20% TL Dry Vans

• 1765 g/mile



2018 SmartWay Carrier Categories and Data Specificity

TRUCK	Dry Van & Chassis	Reefer and Reefer Chassis	Flatbed	Tanker	Heavy & Bulk	Auto Carrier	Moving	Specialized & Utility	Mixed
Dray	Dray 5 Performance Levels								
Truckload	Truckload DryVan 5 Performance Levels	Reefer 5 Performance Levels	Flatbed 5 Performance Levels	Tanker 5 Performance Levels	Heavy & Bulk 5 Performance Levels	Auto Carrier 5 Performance Levels	Moving 5 Performance Levels	Specialized & Utility 5 Performance Levels	Mixed 5 Performance Levels
Expedited	Expedited 5 Performance Levels								
LTL	LTL 5 Performance Levels								
Package	Package Delivery 5 Performance Levels								
Mixed	Mixed								Less than 75% in any category



Internal Metrics

Partner: ABC Trucking, Inc.

Tool: Truck

Display Option #2: By Fleet

Report generated on: 05/06/2020

Data Year: 2019

CO2	Total Emissions (Short Tons)	Total Miles		Loaded Miles		Revenue Miles	
		Grams per Mile (Total)	Grams per Average Payload Ton-Mile (Total)	Grams per Mile (Loaded)	Grams per Average Payload Ton-Mile (Loaded)	Grams per Mile (Revenue)	Grams per Average Payload Ton-Mile (Revenue)
ABC Trucking, Inc.: East Operations	21,366.67	1,932.10	125.88	2,038.80	132.54	2,044.39	132.58
ABC Trucking, Inc.: West Operations	15,572.46	1,855.15	106.99	2,072.85	119.20	2,072.85	119.20

NOx	Total Emissions (Short Tons)	Total Miles		Loaded Miles		Revenue Miles	
		Grams per Mile (Total)	Grams per Average Payload Ton-Mile (Total)	Grams per Mile (Loaded)	Grams per Average Payload Ton-Mile (Loaded)	Grams per Mile (Revenue)	Grams per Average Payload Ton-Mile (Revenue)
ABC Trucking, Inc.: East Operations	37.85522	3.42309	0.22301	3.61212	0.23483	3.62203	0.23489
ABC Trucking, Inc.: West Operations	17.90203	2.13268	0.12299	2.38294	0.13703	2.38294	0.13703

PM2.5	Total Emissions (Short Tons)	Total Miles		Loaded Miles		Revenue Miles	
		Grams per Mile (Total)	Grams per Average Payload Ton-Mile (Total)	Grams per Mile (Loaded)	Grams per Average Payload Ton-Mile (Loaded)	Grams per Mile (Revenue)	Grams per Average Payload Ton-Mile (Revenue)
ABC Trucking, Inc.: East Operations	1.48513	0.13429	0.00875	0.14171	0.00921	0.14210	0.00922
ABC Trucking, Inc.: West Operations	0.15515	0.01848	0.00107	0.02065	0.00119	0.02065	0.00119

PM10	Total Emissions (Short Tons)	Total Miles		Loaded Miles		Revenue Miles	
		Grams per Mile (Total)	Grams per Average Payload Ton-Mile (Total)	Grams per Mile (Loaded)	Grams per Average Payload Ton-Mile (Loaded)	Grams per Mile (Revenue)	Grams per Average Payload Ton-Mile (Revenue)
ABC Trucking, Inc.: East Operations	1.61490	0.14603	0.00951	0.15409	0.01002	0.15452	0.01002
ABC Trucking, Inc.: West Operations	0.16938	0.02018	0.00116	0.02255	0.00130	0.02255	0.00130

SHIPPER DATA

- Shipper tool accounts for all freight movements
 - Truck, rail, air, multimodal and logistics
- Activity data for amount of freight, distance shipped
 - Total miles and/or ton-miles contracted by SmartWay and non-SmartWay carriers
 - Freight characteristics (avg density, avg payload)
- Optional: can assess operational and modal shift strategies



View results for the following company:

LMC Ways Shipping: Retail

View all three tabs to complete this step. This display shows a summary of your carrier's performance based on the selected pollutant -- CO₂, NO_x, or PM. Select a different option below to view a summary for that pollutant. The "Composite" performance shown in the top row is your company's "Emissions Footprint" for the reporting year. A more detailed presentation of performance is shown on the next tab: Carrier Performance.

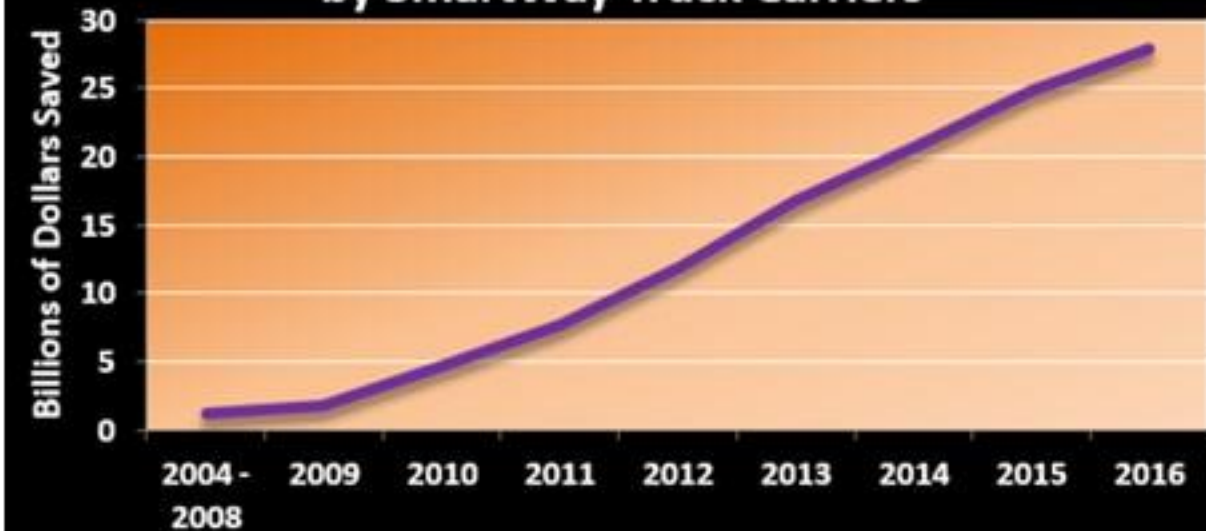
Selected Pollutant:

☒ CO₂ ?☐ NO_x ?☐ PM₁₀ ?☐ PM_{2.5} ?

short tons

Selected Carriers	Carrier Mode	SmartWay Category	Carrier Performance - CO ₂				CO ₂ Total Emissions (tons/year)
			Category Rank	g/mile	Category Rank	g/ton-mile	
Composite ?	All	All		1,713		62	205,137
Hub Group: Intermodal	Multimodal	Surface	--	150	--	38	4,556
non-SmartWay Barge Carrier	Barge		--	23,295	--	19	155
non-SmartWay Logistics Carrier	Logistics		--	2,260	--	136	26,931
non-SmartWay Logistics Carrier	Logistics		--	2,260	--	136	23,024
non-SmartWay Multimodal Carrier	Multimodal		--	1,300	--	42	4,390
non-SmartWay Truck Carrier - Heavy/Bulk	Truck	Heavy/Bulk	--	2,424	--	90	14,888
Rail Modal Average	Rail		--	980	--	20	31,485
West End Express Co. Inc	Truck	Dray	4	1,825	4	90	18,106
YRC Worldwide Inc.: Holland	Truck	LTL/Dry Van	3	1,500	2	110	2,744
Zeitner & Sons, Inc.	Truck	Refrigerated	3	1,665	3	84	25,253

**Fuel Cost Savings
by SmartWay Truck Carriers**



IMPROVING CARRIER RELATIONS

- SmartWay helps shippers improve carrier relations and helps carriers improve performance
 - Incorporate into carrier contracts, education and performance metrics
- Carriers win by saving money on fuel and maintenance costs
- Shippers win with better data, improved sustainability



Freight Matters Webinar

ICCT CASE STUDY REVEALS WAYS TO INCREASE FREIGHT EFFICIENCY AND REDUCE EMISSIONS.

Learn valuable insights from a comprehensive Green Supply Chain Study conducted with the Home Depot.

[REGISTER HERE](#) [EXIT](#)



SmartWay Latest News

- [January Affiliate Calendar](#)
- [Learn about the Home Depot ICCT Study](#)
- [Affiliates Collaborate with SmartWay](#)

More [SmartWay News](#)

Learn about SmartWay



- [Overview of SmartWay](#)
- [Why Freight Matters](#)
- [How SmartWay Advances Sustainable Transportation Supply Chains](#)
- [Sustainability Accounting & Reporting](#)
- [SmartWay Program Successes](#)
- [Trends, Indicators & Partner Statistics \(TIPS\)](#)

Participate in SmartWay



- [How to Participate in SmartWay](#)
- [How the SmartWay Partnership Works](#)
- [Become a SmartWay:](#)
 - [Shipper](#)
 - [Logistics Company](#)
 - [Carrier](#)
 - [Affiliate](#)
- [Tools & Resources for Partners & Affiliates](#)

Search SmartWay

What are you looking for?

[Search this Site](#)

Meet our Partners & Affiliates



- [Learn About Partners and Affiliates](#)
 - [Partners List](#)
 - [Affiliates List](#)
 - [Charter Partners](#)
- [SmartWay Excellence Awardees](#)
- [High Performer Lists](#)
- [Other Partner Achievements](#)
- [Featured Partner Profiles](#)
- [Carrier Performance Rankings](#)

Use the SmartWay Brand



- [Learn About:](#)
 - [The SmartWay Brand](#)
 - [Sharing Your Participation in SmartWay](#)
 - [SmartWay Verified Technologies](#)
 - [SmartWay Tractors & Trailers](#)
 - [Apply the Logo to SmartWay Tractors & Trailers](#)
 - [Partner Press Releases](#)

Upcoming Webinars & Events

- 1/22/20: Tool Demo Webinar—Introduction to the 2020 SmartWay Truck Carrier Tool
- 2/8/2020: Tool Demo Webinar—SmartWay Truck Carrier Tool Advanced Class: Getting the Most out of Your SmartWay Participation
- 2/12/20: Freight Matters Webinar—Travel Green: Supply Chain How The Home Depot Reduces Its Environmental Footprint and Costs
- 2/18/20: Partner Education Webinar—2020 SmartWay Award Criteria Webinar

[View Scheduled Webinars and Past Webinar Recordings](#)

Global Collaboration & SmartWay



Stay Connected: Get the E-



2020 SmartWay Schedule

Information Flow, Availability, and Due Dates



TRUCK

RELEASE DATE

January 15, 2020

DUE DATES

Group 1: March 4, 2020

Group 2: April 8, 2020

Group 3: May 6, 2020

AIR

RELEASE DATE

February 5, 2020

DUE DATE

May 6, 2020

BARGE

RELEASE DATE

March 4, 2020

DUE DATE

May 6, 2020

RAIL

RELEASE DATE

April 8, 2020

DUE DATE

May 6, 2020

The Multimodal Tool accepts data from the Truck, Rail, Barge, and Air Tools.

The Logistics Tool accepts data from the Truck, Rail, Barge, Air, and Multimodal Tools.

The Shipper Tool accepts data from all previous tools.

MULTIMODAL

RELEASE DATE

May 20, 2020

DUE DATE

June 19, 2020

DATA ACCEPTED

- Truck
- Rail
- Barge
- Air

LOGISTICS

RELEASE DATE

July 15, 2020

DUE DATE

September 14, 2020

DATA ACCEPTED

- Truck
- Rail
- Barge
- Air
- Multimodal

SHIPPER

RELEASE DATE

October 7, 2020

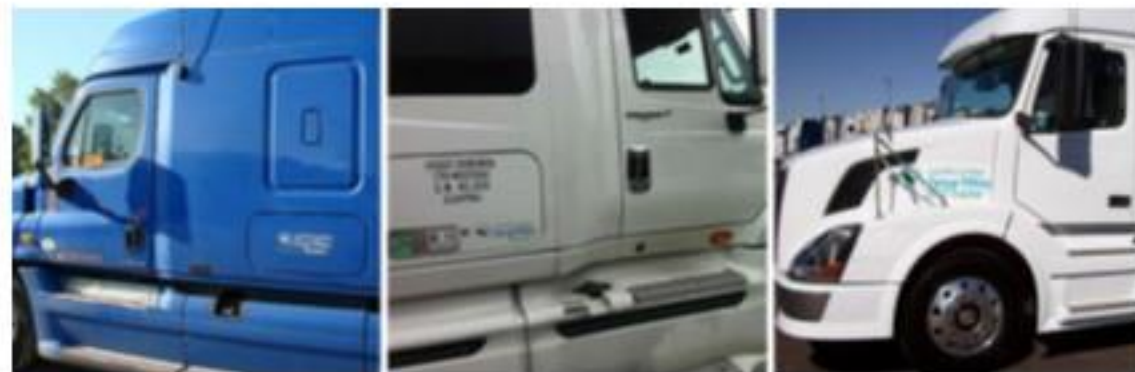
DUE DATE

December 7, 2020

DATA ACCEPTED

- Truck
- Rail
- Barge
- Air
- Multimodal
- Logistics

Technologies & Strategies



Strategies for Efficiency

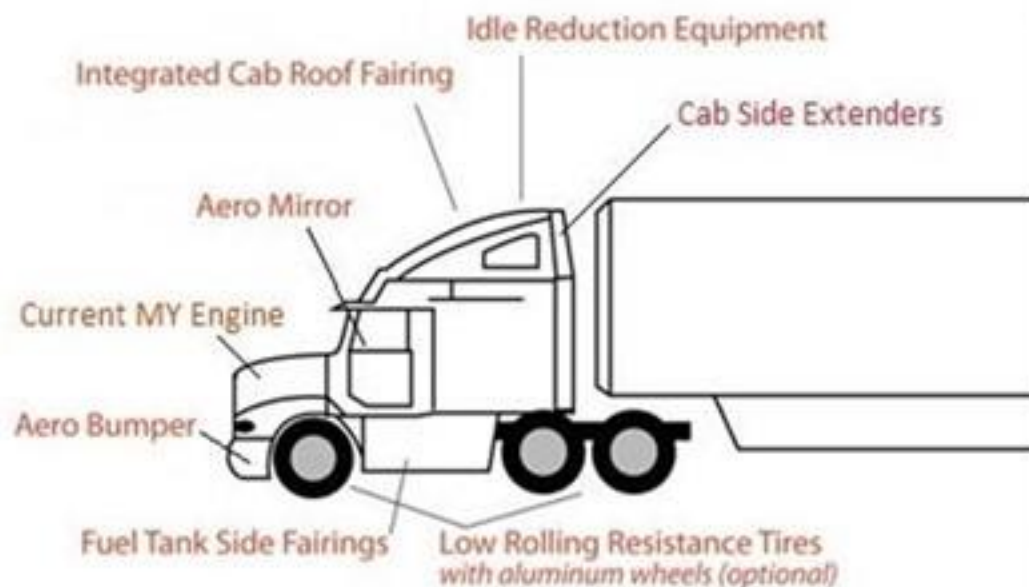
- [Overview of Carrier Strategies \(PDF\)](#)
(3 pp, 182 K, August 2019, EPA-420-F-19-049)
- Fact sheets about each strategy:
 - [Automatic Tire Inflation Systems \(PDF\)](#) (2 pp, 289 K, August 2019, EPA-420-F-19-018)
 - [Driver Training \(PDF\)](#) (2 pp, 197 K, August 2019, EPA-420-F-19-019)
 - [Hybrid Powertrain Technology \(PDF\)](#) (2 pp, 172 K, August 2019, EPA-420-F-19-020)
 - [Idle Reduction \(PDF\)](#) (2 pp, 206 K, August 2019, EPA-420-F-19-021)
 - [Improved Aerodynamics \(PDF\)](#) (2 pp, 179 K, August 2019, EPA-420-F-19-022)
 - [Improved Freight Logistics \(PDF\)](#) (2 pp, 183 K, August 2019, EPA-420-F-19-023)
 - [Intermodal Shipping \(PDF\)](#) (2 pp, 193 K, August 2019, EPA-420-F-19-024)
 - [Longer Combination Vehicles \(PDF\)](#) (2 pp, 179 K, August 2019, EPA-420-F-19-025)
 - [Low Rolling Resistance Tires \(PDF\)](#) (2 pp, 140 K, August 2019, EPA-420-F-19-026)
 - [Low Viscosity Lubricants \(PDF\)](#) (2 pp, 175 K, August 2019, EPA-420-F-19-027)
 - [Maintaining Proper Tire Inflation Pressure \(PDF\)](#) (2 pp, 181 K, August 2019, EPA-420-F-19-028)
 - [Reducing Highway Speed \(PDF\)](#) (2 pp, 153 K, August 2019, EPA-420-F-19-029)
 - [Weight Reduction \(PDF\)](#) (2 pp, 175 K, August 2019, EPA-420-F-19-030)



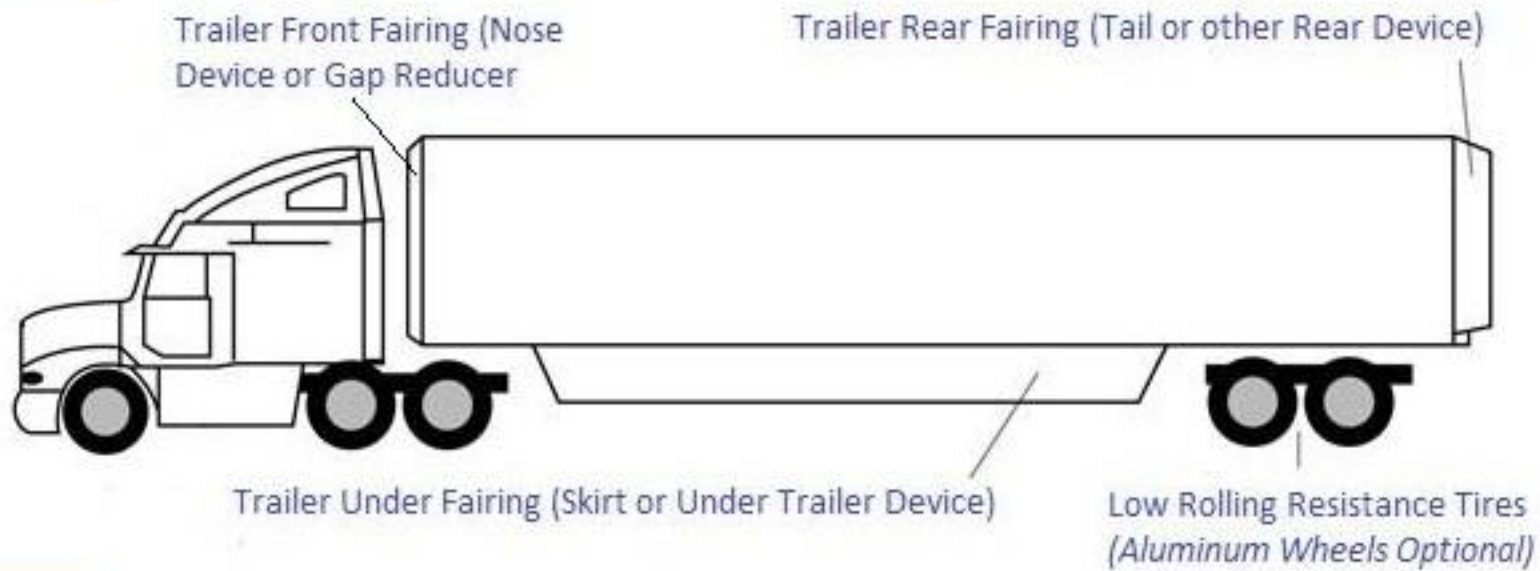
Learn about Efficiency Strategies for Shippers

Fact Sheets and Technical Bulletins

- [Fact Sheet - SmartWay Shipper Strategies \(PDF\)](#). (2 pp, 165K, April 2019, EPA-420-F-19-011)
- [Idle Reduction for Shippers \(PDF\)](#). (2 pp, 229 K, April 2019, EPA-420-F-19-012)
- [Intermodal for Shippers \(PDF\)](#). (2 pp, 221K, April 2019, EPA-420-F-19-013)
- [Load Optimization for Shippers \(PDF\)](#). (2 pp, 220K, April 2019, EPA-420-F-19-014)
- [Packaging Reduction for Shippers \(PDF\)](#). (2 pp, 207K, April 2019, EPA-420-F-19-015)
- [Route and Network Optimization for Shippers \(PDF\)](#). (2 pp, 204K, April 2019, EPA-420-F-19-016)
- [Endnotes for A Glance at Clean Freight Shipper Strategies \(PDF\)](#).
(7 pp, 467K, April 2019, EPA-420-B-19-004)



Component	Specifications
Engine	<ul style="list-style-type: none"> Current model year engine designated to meet U.S. EPA NOx/PM/GHG emission requirements (meaning that the engine's model year should match the vehicle's model year. So a 2019 tractor should have a 2019 engine.)
Aerodynamics	<ul style="list-style-type: none"> Aerodynamically integrated high-roof fairing or cab compartment Aerodynamic mirrors Aerodynamic bumper Tractor side extending fairings (also called tractor gap reducers) Fuel tank fairings (also called chassis fairings)
Tires	<ul style="list-style-type: none"> SmartWay verified low-rolling resistance steer and drive tires (duals or singles) (aluminum wheels optional)
Idle Reduction	<p>Sleeper and day cabs must have automatic engine shut-off (AES) capability.</p> <p>For sleeper cabs, manufacturer availability of at least one option providing eight hours or more of engine idle-free auxiliary power, heat, and/or air conditioning using:</p> <ul style="list-style-type: none"> Auxiliary power unit or generator set Fuel operated heater Battery air conditioning system Thermal Storage System <p>For day cabs, manufacturers are encouraged to provide additional idle reduction options that meet regional-haul needs.</p>



	SmartWay Trailer	SmartWay Elite Trailer
Tires	Verified Low Rolling Resistance Tires (1% fuel savings)	
Aerodynamic Devices	One or more devices (at least 5% fuel savings)	Combination of two or more devices (at least 9% fuel savings)
Total Fuel Savings	6% or more	10% or more

NACFE Confidence Reports

Complete, unbiased review of available technologies for fleet confidence to adopt.



Tire Pressure
Systems



6x2 Axles



Idle Reduction



Transmissions



Engine
Parameters



LRR Tires



Lightweighting



Downspeeding



Maintenance
for FE



Trailer
Aerodynamics



Tractor
Aerodynamics



Lubricants



Platooning



*Engine
Accessories*



Solar

NACFE Guidance Reports

**Guidance Report:
Electric Trucks—Where
They Make Sense**

May 2018

[Download](#)

**Executive Summary:
Electric Trucks—Where
They Make Sense**

May 2018

[Download](#)

**Medium-Duty Electric
Trucks—Cost of
Ownership**

October 2018

[Download](#)

**Executive Summary:
Medium-Duty Electric
Trucks—Cost of
Ownership**

October 2018

[Download](#)

**Amping Up - Charging
Infrastructure for Electric
Trucks**

March 2019

[Download](#)

**Executive Summary:
Amping Up - Charging
Infrastructure for Electric
Trucks**

March 2019

[Download](#)

**Viable Class 7/8
Alternative Vehicles**

December 2019

**Executive Summary:
Viable Class 7/8
Alternative Vehicles**

December 2019

**Guidance Report
Package**

December 2019



RECOGNIZING ACHIEVEMENT



Maine!



NAME	PARTNER SINCE
Ed Thayer, Inc.	01/15/2009
Falcon Transportation LLC	07/01/2015
Hartt Transportation Systems, Inc.	02/22/2006
PAF Transportation Inc.	01/14/2009
Pottle's Transportation, LLC	10/19/2004
R. C. Moore, Inc.	11/09/2011
Sibley & Sons Construction, Inc.	08/15/2019
SPC Transport	04/07/2011
William A. Renaud Jr. Trucking, Inc.	07/19/2017
Yarmouth Lumber Inc	06/26/2008

- Ed Thayer
- FedEx
- Hartt
- PAF
- RC Moore
- Pottle's
- Ryder
- UPS
- WalMart

Stay Connected: Get the E-Update



Enter your email address in the box below to sign up for SmartWay e-Updates.

SIGN UP

Updates are sent as needed, but tend to average about one message per month. After you subscribe, you will receive a confirmation message.

THANK YOU!

Abby Swaine

swaine.abby@epa.gov

617-918-1841

SmartWay and Clean
Freight Programs

Past Webinars

[Event Type Legend](#)

Webinar ↕ Type	↕ Event Name	↕ Primary Audience
Education	2020 SmartWay Award Criteria Webinar	All Partners
Freight Matters!	Toward Greener Supply Chain: How The Home Depot reduces its environmental footprint and costs	All Partners, General Audience
Tool Demo	SmartWay Truck Carrier Tool Advanced Class: Getting the Most out of Your SmartWay Participation	Truck Carriers
Tool Demo	Introduction to the 2020 SmartWay Truck Carrier Tool	Truck Carriers
Education	SmartWay New and Prospective Partner Orientation: Tips for a Rewarding Partnership Experience!	Prospective Partners, New
Education	SmartWay Awardees Share Best Practices	All Partners
Tool Demo	2019 SmartWay Shipper Tool Demonstration	Shippers

APPENDIX

Public Performance Data



Truck Carrier Data Year: 2018; Barge Carrier Data Year: 2018; Rail Carrier Data Year: 2018; Multimodal Carrier Data Year: 2018; Logistics Carrier Data Year: 2018;

Performance Rankings

All Carriers

Click down arrows to filter data by column categories. Select one or more items in the dropdown checklists.

Note: g/m=grams/mile and g/tm=g/ton-mile

Performance Rankings and Emission Factors

Grams per Mile

Grams per Ton-mile

Carrier Fleet Name	Mode	SmartWay Ranking	Fleet Category	Type	SCAC	MCN	US DO	Canadian NSC	g/m CO2 Rank	g/m NOx Rank	g/m PM Rank	g/tm CO2 Rank	g/tm NOx Rank	g/tm PM Rank	g/tm
1-800-Pack-Rat, LLC	Truck	Dray	Private	OPRT	648624	1534531	N/A		1	1555	1	2.7	1	0.025	5
1-Bridge Logistics Corp	Logistics		Private	OBBL	890026	2557559	N/A		5	2375	4	10.25	4	0.333	3
101 Transport, Inc.	Truck	TL/Dry Van	For-Hire	OZOT	625894	1705392	N/A		4	1675	5	5.3	5	0.042	3
1262380 Ontario Limited / DBA as FF Express	Truck	Expedited	For-Hire	FFXR	343105	761735	128-847-408		1	700	1	0.25	1	0.005	5
1527530 Ontario Inc./M&M Carriers	Truck	TL/Dry Van	For-Hire	MNMR	N/A	1159500	142970520		2	1495	5	5.3	5	0.042	2
1541335 Ontario Inc./Road Link Xpress	Truck	TL/Dry Van	For-Hire	ROAD	442882	1063823	143440740		5	1765	4	4.3	5	0.042	5
1542300 Ontario Inc. dba ASR Transportation Inc.	Truck	TL/Dry Van	For-Hire	OFTT	442369	1057019	N/A		1	1405	2	2.3	2	0.018	1
1579901 onatrio inc: asl global logistics	Truck	Mixed	For-Hire	AGBM	46977	1154243	N/A		4	1700	5	6	5	0.09	2
1616270 ontario inc/dba: DM Transport	Truck	Mixed	For-Hire	DMRN	910434	2594381	153748385		3	1600	4	5	5	0.09	2
1628939 Ontario Ltd. o/a P&D Freightlines	Truck	TL/Dry Van	For-Hire	PDGH	521737	1360591	N/A		4	1675	2	2.3	2	0.018	5
1RCM & Associates, LLC	Truck	Refrigerated	For-Hire	RCMQ	035740	3023735	N/A		2	1555	3	3.7	4	0.06	2
1st Choice Logistics LLC	Logistics		For-Hire	N/A	833561	2423750	N/A		4	2025	5	12.75	5	0.433	3
1st Express Inc.	Truck	TL/Dry Van	For-Hire	FSEP	181440	284589	N/A		2	1495	3	3.3	5	0.042	2
2 S G Inc.	Truck	Mixed	For-Hire	TSGG	883204	2534888	N/A		5	1800	5	6	5	0.09	4

Start Here

All

Auto

Dray

Expd

Flat

HB

LTL

Mix

Mov

Pkg

Reef

Spec

Tank

TL

Logistics

MM-S

MM-SA

MM-SM

MM-SAM

Rail

B

...

+

4



PARTNER SUCCESSES

Tyson Foods

- Shipper *and* Carrier partner
- Contract carriers must be SW
- Newsletters / reminders
- eTysonSmartWayLearning Center
- Ultra Light & other FE Equipment
- Driver Coaches, Simulators, Scorecards
- Direct to Customer Shipments
- Truck-to-Rail shift
- Smartway is a KPI



SmartWay will be hosting:
2015 SmartWay Truck Carrier
Tool Demonstration #2
on 3/25/2015 (2 pm-3 pm (ET))

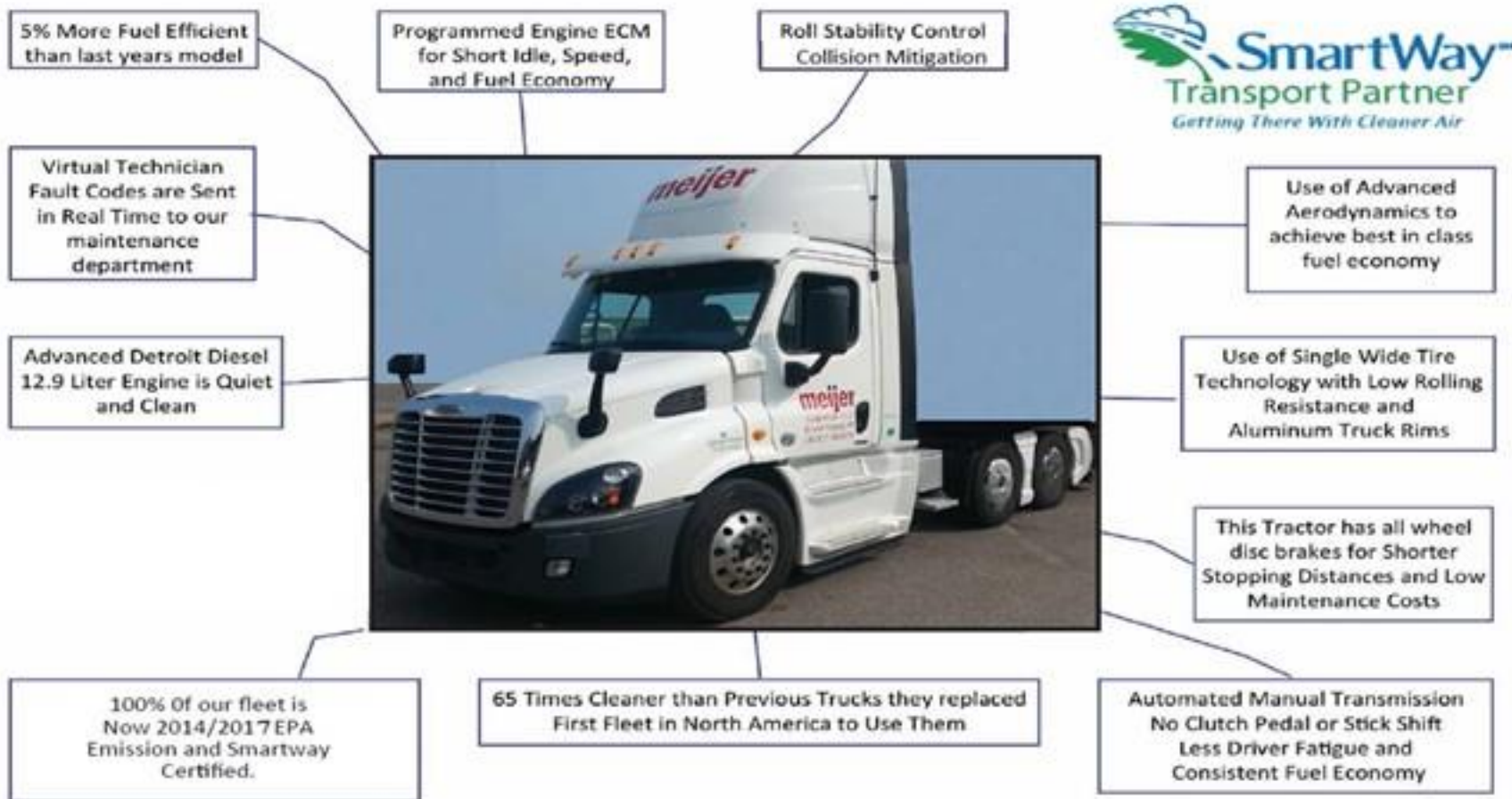
This webinar will provide insight on how to properly fill out your Carrier Tool submission as well as an opportunity to ask questions directly to SmartWay experts.



Please visit the link below to register...

Meijer Logistics

Technology - Equipment





- Manufacturing close to growers
- 92% freight moved by SW carriers
 - Others small & local
 - Carriers vetted by scores & proactive approach
- 2011-2016: CO2 g/ton-mi reduced 65%
- Package redesign
 - More pkgs/pallet and fewer pallets/truck increased payload and reduced shipments
 - 22% reduction in forest fiber & 34% reduction in plastic

- US carriers:
 - All new must be SmartWay; converted existing
 - 98% US land miles are now SmartWay
 - RFB asks for SmartWay scores
 - Working with carriers to increase CNG trucks
- Inbound: CO2 g/shipment down 35% since 2010
- Outbound (model shift & network reconfigure): CO2 g/shipment down 21%
- On track to reduce CO2/\$ 30% 2010-2020

Boyle Transportation



- Truck technology
 - Auto shutdown after 5 min; engines governed 65
 - BACs + FOHs = 90% fuel savings at rest
 - Power pedestals at terminals
 - Fairings, side skirts and LRR tires
- Drivers
 - Teams
 - Telematics yield MPG, idling, speeding, braking, out-of-route data
 - Trained on FE driving
 - Compensated generously for efficiency



SmartWay & the Maine Climate Council



- Recruit SmartWay partners directly and via Affiliates
- Recognize high performing partners
- Ask Maine-based partners to use SmartWay Tools to define their Maine footprints
- Estimate emissions reductions among Maine-based partners attributable to Maine miles and fuel spend
- Showcase Maine shipper and carrier strategies
- Incentivize SmartWay technologies for truck and rail
- Focus state funding on SmartWay technology & partners
- Build truck parking and rail sidings with idle reduction infrastructure

MMTA Annual Membership Meeting – May 8, 2020

Senator Brad Farrin (R) Somerset County



MMTA Annual Membership Meeting – May 8, 2020

COVID-19 UPDATES

National Trends – Highlights of ATRI Study:

- Long-haul trips are down, local trips under 100 miles have increased by more than 100 percent.
- Segments of the industry saw COVID-related increases (medical devices; perishable foods and paper products)
- Nearly 70 percent of specialized and tank truck operations have been negatively impacted.
- Smaller fleets reported greater negative impacts than larger fleets.
- Truck parking was a mixed bag.
- No real changes in detention delays.
- Trucking's perception of economy leans slightly pessimistic.



MMTA Annual Membership Meeting – May 8, 2020

COVID-19 UPDATES

Maine Trends – Highlights of MMTA Survey:

- Revenue/Freight reductions ranged from 2% to 75%
- Layoffs haven't been widespread... yet.
- Capital investments will suffer.
- Other concerns – BMV closure, equipment financing, vehicle utilization and PPE.



MMTA Annual Membership Meeting – May 8, 2020

COVID-19 UPDATES

Maine Response & MMTA's Role

- Rest area closures and shippers not allowing facility entrance
- Governor's office response to trucking's "essentiality" and PPE
- Other MMTA Activities:
 - Communications – e-newsletter frequency
 - MBART
 - Maine Jobs Council
 - Letter to Congress – temporary suspension of FET
 - Liability immunity
 - Proactive on practicality of taking employee temperatures



MMTA Annual Membership Meeting – May 8, 2020

COVID-19 UPDATES

Enforcement & Declarations

- FMCSA Emergency Declaration
- State of Maine – Declaration of Civil Emergency
- Stay Safer at Home – phased reopening plan
- Maine Bureau of Motor Vehicles
- FMCSA Enforcement Notice
- FMCSA Drug and Alcohol Testing Guidance
- Maine State Police – Troop K Response
- HAZMAT



MMTA Annual Membership Meeting – May 8, 2020

COVID-19 UPDATES

QUESTIONS?

COMMENTS?

SUGGESTIONS?



MMTA Annual Membership Meeting – May 8, 2020

MMTA REPORTS

- TDC/PTSC (Randy)
- Annual Banquet Wrap-Up (Brian)
- MMTA Call on Washington (Brian)
- Golf Tournament (Tim)
- MMTA / APTA TSC (Tim)



MMTA Annual Membership Meeting – May 8, 2020

NOMINATING COMMITTEE REPORT

FOR MEMBERSHIP VOTE:

FOR-HIRE CARRIERS - 9

NAME	COMPANY	TERM EXPIRES
Jeff Castonguay	Hartt Transportation Systems	2022
Roland Crawford	Timberland Trucking	2022
Chelsea Demmons	Pottle's Transportation	2022
Kathryn Killory	FedEx Corporation	2022
Randy Macomber	Macomber Transportation	2022
Floyd Thayer	Ed Thayer, Inc.	2022
Mark Chamberland	RF Chamberland	2021
Mark Giuffre	United Parcel Service	2021
Marcus Sibley	Sibley Transportation, Inc.	2021

PRIVATE CARRIERS - 5

NAME	COMPANY	TERM EXPIRES
Gary Cooper	J&S Oil Co., Inc.	2022
George Downing	G. A. Downing Co., Inc.	2022
Ken Cannell	C. N. Brown Company	2021
Jenny Lovering	Walmart Transportation	2021
David Watson	PM Construction	2021

SERVICE INDUSTRY - 8

NAME	COMPANY	TERM EXPIRES
Brian Boulet	Boulet's Truck Service	2022
Peter Moir	Ryder Transportation Services	2022
Kelly McDonald	Murray, Plumb & Murray	2022
Gary Bangor	Hale Trailer Brake & Wheel	2021
Tawnya Brown	Concentra	2021
Brian Hollowell	Freightliner & Western Star of ME	2021
Richard Morrison	Portland North Truck Center	2021
Tim Walton	Walton External Affairs, LLC.	2021

By-Laws:

- Total Maximum = 30
- Total Minimum = 15
- Minimum Per Category = 5



MAINE MOTOR TRANSPORT ASSOCIATION BOARD MEETING

**May 8, 2020
Via Zoom Video Conference**



MMTA Board Meeting – May 8, 2020

SECRETARY'S REPORT

MAINE MOTOR TRANSPORT ASSOCIATION
BOARD OF DIRECTORS MEETING
JANUARY 9, 2020
PORTLAND, MAINE

Chairman Ed Therrien opened the Board Meeting at 1555.

I. Secretary's Report

A motion was made and unanimously voted to accept the Secretary's Report.

II. Action on New Members

New members were voted on and unanimously accepted.

III. New Business

None.

IV. Adjourn

The meeting was adjourned at 1600.

Respectfully Submitted, Shawn Moore, Secretary



MMTA Board Meeting – May 8, 2020

ELECTION OF MMTA OFFICERS

- Chairman – Alan Reed, PAF Transportation
- Vice Chairman – Jeff Bouchard, HO Bouchard
- Secretary – Shawn Moore, R.C. Moore, Inc.
- Treasurer – Duane Graves, Pottle's Transportation
- State VP, ATA – Chelsea Demmons, Pottle's Transportation
- Alternate State VP, ATA – Vacant



MMTA Board Meeting – May 8, 2020

ELECTION OF MMTA SERVICES DIRECTORS

- Ed Therrien, United Insurance
- Alan Reed, PAF Transportation
- Duane Graves, Pottle's Transportation
- Brian Parke, MMTA



MMTA Board Meeting – May 8, 2020

ACTION ON NEW MEMBERS

Member Name	City	Contact Person
2E Trucking LLC	Dover Foxcroft	Brian Tewhey
A.Chartier Trucking & Logging LLC	Mexico	Allen Chartier
Aligned Wireless Services	Gorham	Dustin Spiller
Andro Hydro LLC	Livermore Falls	Steven Boucher
B & B Paving Inc	Hermon	Jaimie Alley
B & T Pallet Recycling	Lewiston	Darce Ouellette
Bojames Spaulding	Knox	Loni- Ann Spaulding
CA & L Trucking	Gorham	David Towle
Centerline Utility Services	Bangor	Mathias Florenz
Classic Boat Shop Inc	Bernard	Margaret Beaulieu
Concrete Services	Waldoboro	Steven Lorentzen
D.F. Wishart & Sons LLC	Clinton	Dan Wishart
Dan Hall Excavation	Whiting	Daniel Hall
DAS Transportation	Freeport	Dean Schlendering
Eastern Plumbing & Heating	Dennysville	Eric Hoche
F & F Trucking LLC	Whiting	Adam Hall
Fournier's Property Maintenance	Lisbon	Jason Founier
Freeman's Construction	Gilead	Freeman Corriveau
Hostetler Truckin	Littleton	Laurie Hostetler
Howe Transport Inc	Lincoln	Harry Howe
J & T Transportation Inc	Barnard TWP	Jason Horne
J V L Trucking Inc	West Paris	John LeBlanc

Member Name	City	Contact Person
J.S. Bedard Trucking Inc	Cornville	Jesse Bedard
JDM Trucking LLC	Levant	Justin Matthews
J-N-J Transport	Jay	Jim Richardson
John's Trucking LLC	Bridgeton	John Butler
JST Logistics LLC	Westbrook	Andre Houde
Libby's Auto Transport	Gorham	Hubert Libby
M. O. Trucking LLC	Arundel	Marek Opielowski
Maine Locomotive & Machine Co.	Alna	Brian Fanslau
Maine Water Company	Saco	Thomas Negrelli
Mast Landing Brewing Company	Westbrook	Andrew Coughlin
N.A Frost Trucking	Monmouth	Nick Frost
Nat Hemond Excavation LLC	Topsham	Nathaniel Hemond
Nirom Inc. DBA Shaker Hill Outdoors	Poland Spring	Greg Morin
Pajok Transport LLC	Yarmouth	Silviyo Olweny
Russell & Sons Towing & Recovery	Norway	Jordan Russell
Savage Land Development LLC	Bethel	CA Savage
Seekins Trucking	Stockton Springs	Duane Seekins
Therriens Used Cards Towing & Recycling LLC	Addison	Vivian Therrien
Tri Tank Corp.	Syracuse (NY)	Kurt Neidlinger
Trufant's Trucking LLC	Bowdoinham	Erland Trufant
William's Farm	Farmingdale	William Rogers

Total members = 1,561



MMTA Board Meeting – May 8, 2020

THANK YOU

